

CERTIFICATE OF LOCATION OF GOVERNMENT CORNER

SOUTHEAST Corner of Section 23, Township 105N, Range 40W, 5th P.M.

STATE OF MINNESOTA, County of MURRAY

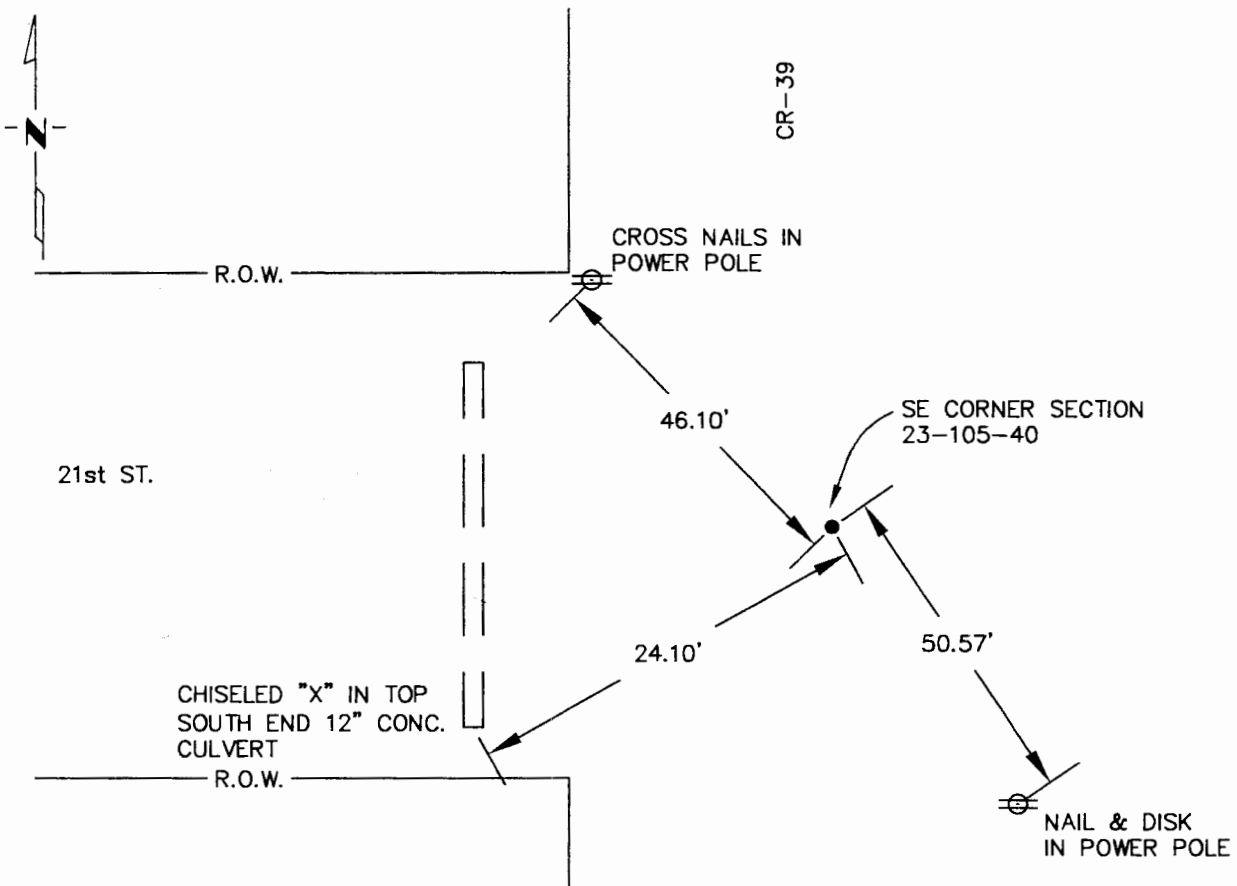
At the corner location shown on the sketch:

On 8-20-03 found a YELLOW CAPPED REBAR (NUMBER DESTROYED) IN ASPHALT PAVING
DATE

left monument as found, lowered monument, removed monument (explain)

On _____ placed a _____
DATE

SKETCH OF REFERENCE TIES



Statement of evidence relative to this corner location is on back of page.

I hereby certify that this document and the data contained herein was prepared by me or under my direct supervision.

R. V. Johnson SIGNATURE 8/22/03 DATE

Registration No. 14330

- Land Surveyor, Professional Engineer
- County Surveyor, County Engineer

OFFICE OF THE COUNTY RECORDER

County of _____

I hereby certify that this document was filed in the Co. Recorders office at _____ .M. on the _____ day of MAR 12 2004 A.D., 19 _____

County Recorder James V. Johnson

By _____, Deputy

DOCUMENT NO. _____